

HORTUS BOTANICUS UNIVERSITATIS VILNENSIS

Vilnius University Botanical Garden
Lithuania

Index seminum 2015



Magnolia hypoleuca Siebold & Zucc

Nr. 25



Vilnius University Botanical Garden
Kairėnų – 43, LT – 10239, VILNIUS – 40
LITHUANIA

Phone/fax: +370 5 2317933

index.seminum@bs.vu.lt, www.botanikos-sodas.vu.lt

Vilnius University Botanical Garden

Vilnius University Botanical Garden was founded in 1781. Since then historical circumstances has led to Botanical Garden being moved 4 times from one location to another. Today the Garden resides in two areas, Vingis Park and Kairėnai Estates. The Garden is the largest in Lithuania (with combined total area of 199 hectares) also it has the most numerous collections of plants in country. There are growing plants of 9,925 taxa, belonging to 220 families and 1120 genera. Largest and most impressive collections are those of rhododendrons, lilacs, lianas, peonies, dahlias and bulb flowers.



Botanical Garden in Kairėnai



Vingis Department
of Vilnius University Botanical Garden



VILNIUS UNIVERSITY BOTANICAL GARDEN

**Kairėnų 43, LT – 10239,
VILNIUS – 40, Lithuania
Phone/fax: +370 5 2317933**

**index.seminum@bs.vu.lt
www.botanikos-sodas.vu.lt**

Site details

Date of foundation: 1781
Gardens area: 191.5 ha in Kairėnai
7.35 ha of Vingis Department

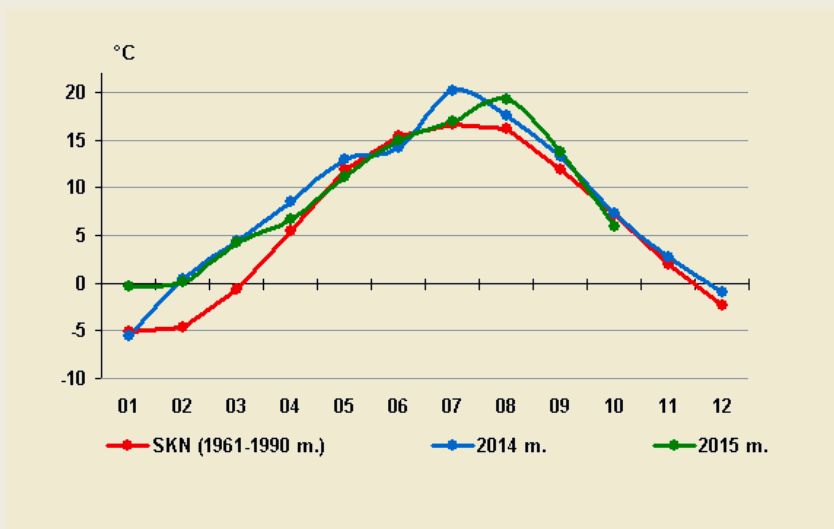
Geographical and climate data

Latitude: N 54°44'08,51"
Longitude E25°24'04,70"

Location map



Mean air temperature in Lithuania during 1961–1990, 2014 and 2015 (<http://www.meteo.lt>):



Important note



Kolkwitzia amabilis

The Vilnius University Botanical Garden has adopted a policy on supplying seeds to the scientific and horticultural community following the International Convention on Biological Diversity (Rio de Janeiro 1992) and The Nagoya Protocol on Access to Genetic Resources and the Fair and Equitable Sharing of Benefits Arising from their Utilization. In consideration to the Regulation (EU) No 511/2014 of the European Parliament and the council (of 16 April 2014) the Vilnius University Botanical Garden will send the plant material only to those recipients which will use it according to the provisions of the Convention on Biological Diversity and The Nagoya Protocol. Seeds from this catalogue are distributed only under the following conditions:

- the plant material is used only for common good, especially for scientific research, education, species conservation and the development of recognized plant collections;

- if the purchased material will be used commercially, written permission must be obtained from the country of material origin or primary "donor". We consider commercialization as whichever economical use of plant material or scientific results gained by research of plant material or its derivatives.

Seeds offered in this catalogue were collected in 2015.

Explanation of the Index Seminum

Example:

Ordering number	Plant name	Accession number
↓	↓	↓
1	<i>Onoclea sensibilis</i> L.	VIN99/752

Nomenclature

The nomenclature in the Index seminum is mainly based on:

<http://www.ars-grin.gov/cgi-bin/npgs/html/index.pl>

<http://www.ipni.org/index.html>

<http://foj.c.u-tokyo.ac.jp/gbif/foj/>

http://asaweb.huh.harvard.edu:8080/databases/botanist_index.html

<http://www.catalogueoflife.org>

Botanikos vardų žodynas. Red. R. Jankevičienė, Vilnius, 1998.

Staff

Director: Audrius Skridaila

Seed collectors: K. Balnytė, G. Busevičiūtė, S. Gataveckienė, V. Guseva, G. Jurkevičienė, V. Pribušauskaitė, J. Puočiauskiene, V. Stakelienė, G. Štukėnienė, R. Turla

INDEX SEMINUM 2015

PTERIDOPHYTA

ONOCLEACEAE

- 1 *Onoclea sensibilis* L. VIN99/752

POLYPODIACEAE

- 2 *Polypodium vulgare* L. 041594

MAGNOLIOPHYTA

MAGNOLIOPSIDA

ACANTHACEAE

- 3 *Acanthus mollis* L. VIN95/161

AMARANTHACEAE

- 4 *Celosia huttonii* 'Flamingo' 151219
5 *Celosia argentea* 'Xanthippe' 561/97
6 *Gomphrena haageana* Klotzsch 150266

APIACEAE

- 7 *Angelica archangelica* L. 131496
8 *Astrantia major* L. 553/93
9 *Cenolophium denudatum* (Fisch. ex Hornem.) Tutin 041586
10 *Eryngium giganteum* M. Bieb. 555/93
11 *Eryngium planum* L. 556/93
12 *Orlaya grandiflora* (L.) Hoffm. 141759

APOCYNACEAE

- 13 *Apocynum cannabinum* L. VIN99/222

AQUIFOLIACEAE

- 14 *Ilex verticillata* (L.) A.Gray 920004
15 *Ilex pedunculosa* Miq. 980002

ARALIACEAE

- 16 *Eleutherococcus leucorhizus* Oliv. 031219
17 *Eleutherococcus sessiliflorus* Rupr. 950075
18 *Eleutherococcus simonii* (G.Hoo) H.Ohashi 030094

ASCLEPIADACEAE

- 19 *Asclepias incarnata* L. VIN82/17
20 *Asclepias incarnata* 'Ice Ballet' VIN02/07

ASPHODELACEAE

- 21 *Kniphofia tuckii* Baker 030375

ASTERACEAE

22	<i>Achillea filipendulina</i> 'Parker'	140537
23	<i>Achillea filipendulina</i> 'Parker's Variety'	140459
24	<i>Achillea ptarmica</i> 'The Pearl'	143012
25	<i>Ageratum houstonianum</i> 'Blue Mink'	93/97
26	<i>Ageratum houstonianum</i> 'Florists Blue'	416/97
27	<i>Ammobium alatum</i> 'Grandiflorum'	150894
28	<i>Antennaria plantaginifolia</i> (L.) Richardson	060951
29	<i>Calendula officinalis</i> L.	419/97
30	<i>Callistephus chinensis</i> 'Chino Mani'	151204
31	<i>Chrysanthemum coronarium</i> 'Chop Suey'	150109
32	<i>Coreopsis auriculata</i> L.	110617
33	<i>Cosmos bipinnatus</i> 'Sensation'	150944
34	<i>Coreopsis grandiflora</i> 'Schnittgold'	490/94
35	<i>Cosmos sulphureus</i> Cav.	150084
36	<i>Dimorphotheca sinuata</i> DC.	451/97
37	<i>Echinacea purpurea</i> 'Meringue'	140917
38	<i>Echinacea purpurea</i> 'Rubinstern'	557/93
39	<i>Echinacea purpurea</i> 'White Swan'	558/93
40	<i>Gaillardia aristata</i> Pursh	031174
41	<i>Gaillardia grandiflora</i> 'Burgunder'	150659
42	<i>Gerbera nivea</i> (DC.) Sch. Bip.	130043
43	<i>Helenium</i> 'Moercheim Beauty'	208/92
44	<i>Helichrysum bracteatum</i> 'Salmon Shades'	538/97
45	<i>Leucanthemum maximum</i> DC.	476/96
46	<i>Liatris spicata</i> (L.) Willd.	454/96
47	<i>Liatris spicata</i> 'Alba'	160/92
48	<i>Ligularia dentata</i> (A.Gray) H. Hara	214/92
49	<i>Ligularia przewalskii</i> Diels	215/92
50	<i>Onopordum acanthium</i> L.	453/97
51	<i>Osteospermum hyoseroides</i> (DC.) Norl.	150978
52	<i>Rudbeckia occidentalis</i> Nutt.	455/97
53	<i>Santolina chamaecyparissus</i> L.	110586
54	<i>Sinacalia tangutica</i> (Maxim.) B. Nord.	VIN99/777
55	<i>Tagetes erecta</i> 'Calando Golden'	131222
56	<i>Tagetes erecta</i> 'Doubloon'	457/97
57	<i>Tagetes erecta</i> 'Zitronen Prinz'	575/97
58	<i>Tagetes patula</i> 'Bonanza Yellow'	151879
59	<i>Tagetes patula</i> 'Carmen'	571/97
60	<i>Tagetes patula</i> 'Marigold'	460/97
61	<i>Tagetes patula</i> 'Petite Gelb'	567/97
62	<i>Tagetes patula</i> 'Petite Orange'	570/97
63	<i>Tagetes patula</i> 'Red Brocade'	131221
64	<i>Tagetes patula</i> 'Valencia'	141916
65	<i>Tagetes tenuifolia</i> 'Sperling's Sol'	568/97
66	<i>Tanacetum balsamita</i> L.	VIN73/1106
67	<i>Verbesina alternifolia</i> (L.) Britton ex Kearney	030482



Dasiphora fruticosa



Acaena buchaniinii



Cotoneaster nebrodensis

68	<i>Xeranthemum annuum</i> L.	150826
69	<i>Zinnia elegans</i> 'Green Envy'	151986
70	<i>Zinnia elegans</i> 'Liliput'	463/97
71	<i>Zinnia elegans</i> 'Profusion Mix'	150508
72	<i>Zinnia multiflora</i> L.	464/97
73	<i>Zinnia peruviana</i> L.	465/97
74	<i>Zinnia peruviana</i> 'Bonita Yellow'	150944

BALSAMINACEAE

75	<i>Impatiens balsamina</i> L.	100376
----	-------------------------------	--------

BASELLACEAE

76	<i>Basella alba</i> 'Alba'	572/97
----	----------------------------	--------

BERBERIDACEAE

77	<i>Berberis heteropoda</i> Schrenk ex Fisch. & C. A. Mey. var. <i>sphaerocarpa</i> (Kar. & Kir.) Ahrendt	970690
78	<i>Podophyllum hexandrum</i> Royle	108/97

BIGNONIACEAE

79	<i>Incarvillea delavayi</i> Bureau et Franch.	466/97
----	---	--------

BRASSICACEAE

80	<i>Arabis purpurea</i> Sm.	140147
81	<i>Draba aizoides</i> 'Improved Napoleon'	120391
82	<i>Iberis amara</i> L.	140069
83	<i>Lunaria rediviva</i> L.	060949

BUDDLEJACEAE

84	<i>Buddleja davidii</i> Franch.	706/00
----	---------------------------------	--------

CAMPANULACEAE

85	<i>Campanula latifolia</i> 'Alba'	020231
86	<i>Platycodon grandiflorum</i> (Jacq.) A.DC.	550/97

CAPPARACEAE

87	<i>Cleome hassleriana</i> 'Spirit Violeta'	511/96
----	--	--------

CAPRIFOLIACEAE		
88	<i>Viburnum burejaeticum</i> Regel & Herder	980369
89	<i>Viburnum corylifolium</i> Hook.f. & Thomson	920400
90	<i>Viburnum opulus</i> L. var. <i>sargentii</i> (Koehne) Takeda	950019
91	<i>Weigela japonica</i> Thunb.	031345
CARYOPHYLLACEAE		
92	<i>Dianthus deltoides</i> 'Flashing Light'	131267
93	<i>Dianthus giganteus</i> d'Urv. subsp. <i>croaticus</i> (Borbas) Tutin	140287
94	<i>Gypsophila paniculata</i> L.	471/97
95	<i>Lychnis chalconica</i> L.	150849
96	<i>Lychnis viscaria</i> L.	130405
97	<i>Silene compacta</i> Fisch. ex Hornem.	110113
98	<i>Silene pendula</i> 'Compacta'	110636
CELASTRACEAE		
99	<i>Euonymus alatus</i> (Thunb.) Siebold	921197
100	<i>Euonymus hamiltonianus</i> Wall. var. <i>maackii</i> (Rupr.) Kom.	925066
101	<i>Euonymus macropterus</i> Rupr.	922045
102	<i>Tripterygium regelii</i> Sprague & Takeda	920584
CHENOPODIACEAE		
103	<i>Atriplex hortensis</i> 'Rubra'	040127
104	<i>Dysphania schraderiana</i> (Schult.) Mosyakin & Clemants	031687
CLUSIACEAE		
105	<i>Hypericum olympicum</i> L.	140478
106	<i>Hypericum orientale</i> L.	030693
COMMELINACEAE		
107	<i>Commelina tuberosa</i> L.	151215
CONVALLARIACEAE		
108	<i>Convallaria majalis</i> 'Rosea'	425/96
CRASSULACEAE		
109	<i>Umbilicus oppositifolius</i> (Ledeb.) Ledeb.	VIN99/335
DIPSACACEAE		
110	<i>Dipsacus laciniatus</i> L.	456/93
ERICACEAE		
111	<i>Chamaedaphne calyculata</i> (L.) Moench	931430
112	<i>Empetrum nigrum</i> subsp. <i>asiaticum</i> (Nakai ex H.Ito) Kuvaev	920547
113	<i>Enkianthus campanulatus</i> (Miq.) G. Nicholson	010089

114	<i>Gaultheria procumbens</i> L.	930398
115	<i>Kalmia angustifolia</i> L.	920146
116	<i>Leucothoe fontanesiana</i> Sleum.	002042
117	<i>Mensiesia ferruginea</i> Sm.	950074
118	<i>Menziesia pentandra</i> Maxim.	920489
119	<i>Rhododendron aureum</i> Georgi	920549
120	<i>Rhododendron brachycarpum</i> D.Don ex G.Don	950684
121	<i>Rhododendron camtshaticum</i> Pall.	931076
122	<i>Rhododendron canadense</i> (L.) Toor.	911006
123	<i>Rhododendron canadense</i> (L.) Torr. f. <i>albiflorum</i> (Rand et Redfield) Rehder	990093
124	<i>Rhododendron caucasicum</i> Pall.	961507
125	<i>Rhododendron ferrugineum</i> L.	950010
126	<i>Rhododendron japonicum</i> (Blume C.K. Schneid.	020060
127	<i>Rhododendron luteum</i> Sweet	910109
128	<i>Rhododendron prinophyllum</i> (Small) Millais	920305
129	<i>Rhododendron prunifolium</i> (Small) Millais	990055
130	<i>Rhododendron schlippenbachii</i> Maxim	920560
131	<i>Rhododendron smirnovii</i> Trautv.	920015
132	<i>Rhododendron vasseyi</i> A. Gray	990100
133	<i>Rhododendron yedoense</i> Maxim. var. <i>poukhanense</i> (H. Lev.) Nakai	980183

EUPHORBIACEAE

134	<i>Euphorbia lathyris</i> L.	070366
-----	------------------------------	--------

FABACEAE

135	<i>Amorpha nana</i> Nutt.	960816
136	<i>Astragalus cicer</i> L.	060947
137	<i>Baptisia australis</i> (L.) R.Br.	060950
138	<i>Colutea arborescens</i> L.	090187
139	<i>Cytisus nigricans</i> L.	090341
140	<i>Glycine max</i> (L.) Merr.	150870
141	<i>Desmodium canadense</i> (L.) DC.	030759
142	<i>Maackia amurensis</i> Rupr. & Maxim.	921196
143	<i>Phaseolus coccineus</i> L.	151877
144	<i>Thermopsis villosa</i> (Walter) Fernald. & B.G. Schub.	VIN00/564



Teucrium hircanicum



Sorbus reducta



Globularia cordifolia

HAMAMELIDACEAE

145 *Hamamelis virginiana* L. 950306

HYDRANGEACEAE

146 *Deutzia parviflora* Bunge 940537

147 *Schizophragma hydrangeoides* Siebold & Zucc. 881190

LAMIACEAE

148 *Hyssopus officinalis* L. 140467

149 *Lavandula angustifolia* 'Munstead' 140465

150 *Nepeta grandiflora* M. Bieb. 150235

151 *Nepeta nervosa* Royle ex Benth. 140924

152 *Salvia amplexicaulis* Lam. VIN97/121

153 *Salvia coccinea* 'Lady in Red' 150498

154 *Salvia glutinosa* L. VIN01/356

155 *Salvia nemorosa* L. 130089

156 *Salvia nemorosa* 'Schwellenburg' 140925

157 *Salvia officinalis* L. 60/94

158 *Salvia splendens* Ker Gawl. 510/96

159 *Salvia splendens* Gawl. 'Sperli's Carabiniere' 569/97

160 *Salvia verticillata* L. 130090

161 *Salvia viridis* 'Clary Bouquet' 150432

162 *Stachys byzantina* K.Koch 172/92

163 *Stachys officinale* (L.) Trevis. 130570

164 *Teucrium hircanicum* L. 140416

165 *Teucrium orientale* L. 130207

LINACEAE

166 *Linum grandiflorum* 'Gold Dream' 481/97

MALVACEAE

167 *Alcea rosea* L. 238/94

168 *Lavatera cretica* L. 151210

169 *Lavatera olbia* L. 482/97

170 *Lavatera thuringiaca* 'Ice Cool' 483/97

171 *Sida hermaphrodita* (L.) Rusby 060965

NYCTAGINACEAE

172 *Mirabilis jalapa* L. 040903

173 *Mirabilis jalapa* 'Lutea' 602/94

174 *Mirabilis jalapa* 'Pink' 601/94

OLEACEAE

175 *Forsythia viridissima* Lindl. 930564

ONAGRACEAE

176 *Gaura lindheimeri* Engelm. & Gray 150833

177 *Lopezia racemosa* Cav. VIN94/453

PAPAVERACEAE

178 *Eschscholzia californica* 'Orange' 606/94
179 *Papaver orientale* L. 'Carneum' 100867
180 *Papaver orientale* 'Royal Wedding' 120870
181 *Papaver somniferum* L. 509/96
182 *Sanguinaria canadensis* L. 131592

PHYTOLACCACEAE

183 *Phytolacca americana* L. 547/97

PLANTAGINACEAE (SCROPHULARIACEAE)

184 *Antirrhinum majus* L. 563/97
185 *Antirrhinum majus* 'Appleblossom' 574/97
186 *Antirrhinum orontium* L. VIN94/865
187 *Digitalis grandiflora* Mill. 140281
188 *Digitalis purpurea* L. 77/92
189 *Globularia cordifolia* L. 990203
190 *Globularia dumulosa* O.Schwarz 041220
191 *Globularia trichosantha* Fisch. & C. A. Mey. 120315
192 *Penstemon fruticosus* (Pursh) Greene
var. *scouleri* (Lindl.) Cronquist 'Albus' 050601
193 *Veronica gentianoides* Vahl VIN96/386
194 *Veronica spicata* L. 492/92

POLEMONIACEAE

195 *Phlox drummondii* (mix) Hook. 110100

RANUNCULACEAE

196 *Actaea europaea* (Schipcz.) J.Compton VIN98/3
(*Cimicifuga europaea* Schipcz.)
197 *Anemone alpina* L. 120048
198 *Anemone cylindrica* A. Gray 415/97
199 *Anemone cylindrica* A. Gray 140420
200 *Aquilegia vulgaris* L. 489/97
201 *Clematis alpina* (L.) Mill. 790085
202 *Clematis columbiana* (Nutt.) Torr. & A.Gray 960125
203 *Clematis fusca* Turcz. 910096
204 *Clematis macropetala* 'White Moth' 940382
205 *Clematis potaninii* Maxim. 950137
206 *Delphinium cultorum* Voss. 030503
207 *Eranthis hyemalis* Salisb. VIN74/1769
208 *Trollius cultorum* 'Orange Princess' 234/97

ROSACEAE

209 *Acaena buchananii* Hook. f. 060528



Hamamelis virginiana



Anemone alpina



Orlaya grandiflora

210	<i>Acaena magellanica</i> Vahl	120049
211	<i>Aruncus dioicus</i> (Walter) Fernald	565/97
212	<i>Cotoneaster bullatus</i> Bois	930590
213	<i>Cotoneaster bullatus</i> Bois var. <i>floribundus</i> (Stapf) Rehder & E. H. Wilson	930596
214	<i>Cotoneaster franchetii</i> Bois	990362
215	<i>Cotoneaster horizontalis</i> Decne.	930553
216	<i>Cotoneaster microphyllus</i> Wall. ex Lindl. var. <i>glacialis</i> Hook. f. ex Wenz.	950162
217	<i>Cotoneaster nebrodensis</i> K.Koch	960194
218	<i>Cotoneaster nitens</i> Rehders & E.H.Wilson	950161
219	<i>Geum coccineum</i> Sibth. & Sm.	5/92
220	<i>Photinia villosa</i> (Thunb.) Decne	910200
221	<i>Sanguisorba canadensis</i> L.	VIN98/6
222	<i>Sorbus reducta</i> Diels	030304

RUTACEAE

223	<i>Phellodendron amurense</i> Rupr.	930209
224	<i>Ruta graveolens</i> L.	225/96

SAPINDACEAE (ACERACEAE)

225	<i>Acer pictum</i> Thunb. ex Murray	920513
226	<i>Acer pseudosieboldianum</i> (Pax) Kom.	960803

SAXIFRAGACEAE

227	<i>Tellima grandiflora</i> (Purch) Douglas ex Lindley	VIN94/319
-----	---	-----------

SCHISANDRACEAE

228	<i>Schisandra chinensis</i> (Turcz.) Baill.	781043
-----	---	--------

SCROPHULARIACEAE

229	<i>Verbascum phoeniceum</i> L.	090558
-----	--------------------------------	--------

SOLANACEAE

230	<i>Datura metel</i> L.	498/94
231	<i>Datura stramonium</i> L.	030639
232	<i>Nicotiana alata</i> Link & Otto	621/94
233	<i>Nicotiana langsdorffii</i> 'Lemon Tree'	150438

234	<i>Nicandra physalodes</i> (L.) Gaertn.	499/94
235	<i>Physalis alkekengi</i> L.	623/94
THEACEAE		
236	<i>Stewartia serrata</i> Maxim.	020314
THYMELAEACEAE		
237	<i>Daphne mezereum</i> L.	VIN00/559
238	<i>Daphne mezereum</i> 'Album'	950535
VALERIANACEAE		
239	<i>Valeriana officinalis</i> L.	445/97
VERBENACEAE		
240	<i>Verbena bonariensis</i> L.	150113
241	<i>Verbena hastata</i> L.	150758
242	<i>Verbena officinalis</i> L.	030338
243	<i>Verbena rigida</i> Spreng.	150756
244	<i>Verbena stricta</i> Vent.	495/97
LILIOPSIDA		
ALLIACEAE		
245	<i>Allium angulosum</i> L.	041582
246	<i>Allium cristophii</i> Trautv.	412/96
247	<i>Allium giganteum</i> Regel	413/96
248	<i>Allium karataviense</i> Regel	414/96
249	<i>Allium moly</i> L.	418/96
250	<i>Agapanthus umbellatus</i> L'Hér.	681/00
ARACEAE		
251	<i>Amorphophallus bulbifer</i> Blume	705/00
ASPARAGACEAE		
252	<i>Anthericum ramosum</i> L.	VIN78//718
253	<i>Asparagus officinalis</i> L.	419/96
254	<i>Ornithogalum viridiflorum</i> (I. Verd.) J. C. Manning & Goldblatt	VIN99/12
CYPERACEAE		
255	<i>Carex grayi</i> J. Carey	496/97
HEMEROCALLIDACEAE		
256	<i>Hemerocallis esculenta</i> Koidz.	080034
257	<i>Hemerocallis lilioasphodelus</i> L.	530/00
HYACINTHACEAE		
258	<i>Camassia leichtlinii</i> Baker	497/97

IRIDACEAE

259	<i>Iris aphylla</i> L.	120515
260	<i>Iris pseudacorus</i> L.	142019
261	<i>Iris longipetala</i> Herb.	151394
262	<i>Iris ochroleuca</i> 'Gigantea'	151411
263	<i>Iris pseudacorus</i> L. f. lemon	142022
264	<i>Iris pseudacorus</i> 'Beuron'	142021
265	<i>Iris sibirica</i> 'Foulford White'	142016
266	<i>Iris setosa</i> Pall. ex Link	142017
267	<i>Iris oxypetala</i> Bunge	142020
268	<i>Iris caucasica</i> Hoffman	151398
269	<i>Iris humilis</i> Georgi	151444

LILIACEAE

270	<i>Fritillaria imperialis</i> L.	701/00
271	<i>Tulipa tarda</i> Stapf	646/95
272	<i>Tulipa turkestanica</i> Regel.	091514
273	<i>Tulipa urumiensis</i> Stapf	091518

POACEAE

274	<i>Briza maxima</i> L.	130256
275	<i>Elymus hystrix</i> L.	VIN00/380
276	<i>Lagurus ovatus</i> L.	437/97
277	<i>Panicum virgatum</i> L.	VIN99/198
278	<i>Spartina pectinata</i> 'Aureomarginata'	240/92
279	<i>Stipa calamagrostis</i> (L.) Wahlenb.	140941
280	<i>Zea mays</i> 'Strawberry Corn'	498/97

Agreement on the supply of plant material¹

According to the provisions and decisions of the Convention on Biological Diversity of 1992 (CBD) and of the Regulation (EU) No 511/2014 of the European Parliament and the council of 16 April 2014, on compliance measures for users from the Nagoya Protocol on Access to Genetic Resources and the Fair and Equitable Sharing of Benefits Arising from their Utilization in the Union, the Vilnius University Botanical Garden is promoting the conservation, sustainable use, and research of biological diversity. The garden therefore expects its partners in acquiring, maintaining, and transferring plant material to always act in accordance with the CBD, the Nagoya Protocol and the Convention on the International Trade in Endangered Species (CITES). The responsibility for legal handling of the plant material passes on to the recipient upon receipt of the material. The requested plant material will be supplied to the recipient only on the following conditions:

1. Based on this agreement, the plant material is supplied only for non commercial use such as scientific study and educational purposes as well as environmental protection. Should the recipient at a later date intend a commercial use or a transfer for commercial use, the country of origin's (the primary "donor" of material) prior informed consent (PIC) must be obtained in writing before the material is used or transferred. The recipient is responsible for ensuring an equitable sharing of benefits with the country of material origin or the primary "donor"².
2. On receiving the plant material, the recipient endeavors to document the received plant material, its origin (country of origin, first receiving garden, "donor" of the plant material, year of introduction) as well as the acquisition and transfer conditions in a comprehensible manner.
3. In the event that scientific publications are produced based on the supplied plant material, the recipient is obliged to indicate the origin of the material (the supplying garden and if known the country of origin or primary donor) and to send these publications to the garden and to the country of origin (primary "donor") without request.
4. On request, the garden will forward relevant information on the transfer of the plant material to the body charged with implementing the CBD³.
5. The recipient may transfer the received plant material to third parties only under these terms and conditions and must document the transfer in a suitable manner.

¹ According to the CBD "genetic resources" means genetic material of actual or potential value. This definition covers both living and non-living material.

² The country of material origin or the primary "donor" of the material provided by Vilnius University Botanical Garden is possible to identify using accession number of specimen (indicated on the Seed List) and information available on-line <http://botsodas.lt/indexplantarum/index/lang/en> .

³ Ideally, the national focal point in the garden's home country.

I accept these conditions.

Date & Signature

Recipient's name, address, stamp



Vilnius University Botanical Garden

Kairėnų 43, LT – 10239,
VILNIUS – 40, Lithuania
Phone/fax: +37052317933

Web: www.botanikos-sodas.vu.lt
E-mail: index.seminum@bs.vu.lt

DESIDERATA, 2015

Seeds can be ordered by desiderata card or e-mail. Please limit Your order to 25 samples (use serial (left side) numbers).

Please note that request for seeds should be made before **31 of MARCH 2016**.