

HORTUS BOTANICUS UNIVERSITATIS VILNENSIS

Vilnius University Botanical Garden

Lithuania



# Index seminum 2016

Seed list (Nr. 26)



**Vilnius University Botanical Garden**

Kairėnų – 43, LT – 10239, VILNIUS – 40  
LITHUANIA

Phone/fax: +370 5 2317933

[index.seminum@bs.vu.lt](mailto:index.seminum@bs.vu.lt),

[www.botanikos-sodas.vu.lt](http://www.botanikos-sodas.vu.lt)

## The History of the Botanical Garden

Vilnius University Botanical Garden was founded in 1781. Since then historical circumstances has led to Botanical Garden being moved 4 times from one location to another. Today the Garden resides in two areas, Vingis Park and Kairėnai Estates, and is not only the largest in Lithuania (with combined total area of 199 hectares) but also have the most numerous collections of plants. There are growing about 9,925 taxa, belonging to 220 families and 1120 genera. Largest and most impressive collections are those of rhododendrons, lilacs, lianas, peonies, dahlias and bulb flowers.



Botanical Garden in Kairėnai



Vingis Department of Vilnius University Botanical Garden



### Site details

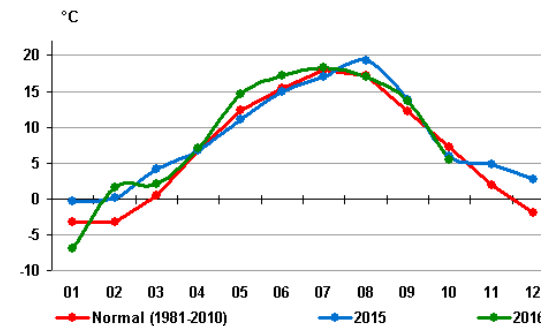
Date of foundation: 1781  
Gardens area: 191.5 ha in Kairėnai  
7.35 ha of Vingis Department

### Geographical and climate data

Latitude: N 54°44'08,51"  
Longitude E25°24'04,70"



Mean air temperature in Lithuania during 1981–2010, 2015 or 2016 (<http://www.meteo.lt>):





## Convention on the exchange of plant material

The Vilnius University Botanical Gardens has adopted a policy on supplying seeds to the scientific and horticultural community following the International Convention on Biological Diversity (Rio de Janeiro 1992) and The Nagoya Protocol on Access to Genetic Resources and the Fair and Equitable Sharing of Benefits Arising from their Utilization to the Convention on Biological Diversity (2010). In consideration to the Convention the Vilnius University Botanic Gardens gives plant material only to those who use it according to the Convention. Seeds from this catalogue are distributed only under the following conditions:

- the plant material is used only for common good, especially for scientific research, education, species conservation and the development of recognized plant collections;
- if the purchased material is used commercially written permission must be obtained from the Vilnius University Botanical Gardens. We consider commercialization as any economical use of scientific results won by plant material or its derivatives.

Orders received for seeds are taken as acceptance of these conditions.

### Information about Index Seminum

Seeds were collected in 2016

\* - Seeds were collected in 2015

Explanation of the Index Seminum. Example:

| Ordering number | Plant name                   | Accession number |
|-----------------|------------------------------|------------------|
| ↓               | ↓                            | ↓                |
| 1               | <i>Onoclea sensibilis</i> L. | VIN99/752        |

### Nomenclature:

<http://www.catalogueoflife.org>

<http://www.ars-grin.gov/cgi-bin/npgs/html/index.pl>

<http://www.ipni.org/index.html>

Botanikos vardu žodynas. Red. R. Jankevičienė, Vilnius.1998.

### VILNIUS UNIVERSITY BOTANICAL GARDEN

Kairėnų – 43, LT – 10239, VILNIUS – 40, LITHUANIA

Phone/fax: +370 5 2317933

index.seminum@bs.vu.lt

www.botanikos-sodas.vu.lt



### Staff

Director: Dr. A.Skridaila

Compiled by: I.Narbutaitė

Designer: I.Raubaitė

Photographers: G.Jurkevičienė, K.Balnytė, S.Gataveckienė, V. Guseva, V.Juozulynaitė

### Seed collectors:

K.Balnytė, G.Busevičiūtė, S.Gataveckienė, V.Guseva, V.Pribušauskaitė,

J.Puočiauskienė, R.Šimėnaitė, Dr. G.Štukėnienė, R.Turla

# INDEX SEMINUM 2016

## TRACHEOPHYTA

### **Liliopsida**

#### **Amaryllidaceae (Alliaceae)**

- |   |                                  |        |
|---|----------------------------------|--------|
| 1 | <i>Allium angulosum</i> L.       | 041582 |
| 2 | <i>Allium sphaerocephalon</i> L. | 130414 |

#### **Asparagaceae**

- |   |  |           |
|---|--|-----------|
| 3 | <i>Anthericum ramosum</i> L.   | VIN78/718 |
| 4 | <i>Ornithogalum candicans</i> (Baker) J. C. Manning & Goldblatt  | 586/94    |
| 5 | <i>Ornithogalum magnum</i> Krasch. & Schischk.   | 120864    |
| 6 | <i>Ornithogalum viridiflorum</i> (I.Verd.) J.C.Manning & Goldblatt (= <i>Galtonia viridiflora</i> I.Verd.) | VIN99/12  |

#### **Commelinaceae**

- |   |   |        |
|---|---|--------|
| 7 | <i>Commelina tuberosa</i> L.            | 151215 |
| 8 | <i>Tinantia erecta</i> (Jacq.) Schlecht | 030315 |

#### **Convallariaceae**

- |   |                                    |        |
|---|------------------------------------|--------|
| 9 | <i>Convallaria majalis</i> 'Rosea' | 425/96 |
|---|------------------------------------|--------|

#### **Hemerocallidaceae**

- |    |   |        |
|----|---|--------|
| 10 | <i>Hemerocallis middendorffii</i> Trautv. et C. A. Mey. | 531/00 |
|----|---|--------|

#### **Iridaceae**

- |    |  |        |
|----|--|--------|
| 11 | <i>Eremurus robustus</i> Regel               | 040018 |
| 12 | <i>Iris domestica</i> (L.) Goldblatt & Mabb. | 141998 |
| 13 | <i>Iris sibirica</i> L.                      | 264/00 |

#### **Liliaceae**

- |    |                                   |        |
|----|-----------------------------------|--------|
| 14 | <i>Tulipa bifloriformis</i> Vved. | 091621 |
| 15 | <i>Tulipa sylvestris</i> L.       | 091630 |
| 16 | <i>Tulipa tarda</i> Stapf.        | 646/95 |

- |    |                                  |        |
|----|----------------------------------|--------|
| 17 | <i>Tulipa turkestanica</i> Regel | 091514 |
| 18 | <i>Tulipa urumiensis</i> Stapf.  | 091518 |

### **Poaceae**

- |    |  |           |
|----|--|-----------|
| 19 | <i>Chloris barbata</i> Sw.                     | 160106    |
| 20 | <i>Elymus hystrix</i> L.                       | VIN00/380 |
| 21 | <i>Lagurus ovatus</i> L.                       | 437/97    |
| 22 | <i>Miscanthus sacchariflorus</i> (Maxim) Hack. | VIN78/652 |
| 23 | <i>Panicum virgatum</i> L.                     | VIN99/198 |
| 24 | <i>Paspalum dilatatum</i> Poir.                | 160260    |
| 25 | <i>Polypogon maritimus</i> Willd.              | 160259    |
| 26 | <i>Setaria italica</i> (L.) 'Brown Type'       | 140321    |
| 27 | <i>Stipa calamagrostis</i> (L.) Wahlenb.       | 140941    |
| 28 | <i>Stipa tenuissima</i> Trin                   | 160390    |
| 29 | <i>Zea mays</i> 'Strawberry Corn'              | 498/97    |

### **Magnoliopsida**

#### **Acanthaceae**

- |    |                           |           |
|----|---------------------------|-----------|
| 30 | <i>Acanthus mollis</i> L. | VIN95/161 |
|----|---------------------------|-----------|

#### **Apiaceae**

- |    |  |           |
|----|--|-----------|
| 31 | <i>Angelica archangelica</i> L.                        | 131496    |
| 32 | <i>Astrantia major</i> L.                              | VIN78/505 |
| 33 | <i>Cenolophium denudatum</i> (Fisch. ex Hornem.) Tutin | 041586    |

#### **Apocynaceae**

- |    |                               |           |
|----|-------------------------------|-----------|
| 34 | <i>Apocynum cannabinum</i> L. | VIN99/222 |
|----|-------------------------------|-----------|

#### **Araliaceae**

- |    |   |        |
|----|---|--------|
| 35 | <i>Eleutherococcus leucorhizus</i> Oliv.        | 031219 |
| 36 | <i>Eleutherococcus sessiliflorus</i> Rupr.      | 950075 |
| 37 | <i>Eleutherococcus simonii</i> (G.Hoo) H.Ohashi | 030094 |

|                       |  |           |  |            |
|-----------------------|--|-----------|--|------------|
| <b>Asclepiadaceae</b> |  |           | 68 <i>Solidago rigida</i> L.   | VIN02/514  |
| 38                    | <i>Asclepias incarnata</i> L.  | VIN82/17  | 69 <i>Tagetes erecta</i> L. Mix  | 723/00     |
| 39                    | <i>Asclepias syriaca</i> L.  | 543/97    | 70 <i>Tagetes tenuifolia</i> 'Sperling's Sol'                                      | 568/97     |
| <b>Asteraceae</b>     |  |           | 71 <i>Tanacetum balsamita</i> L.   | VIN93/1106 |
| 40                    | <i>Achillea filipendulina</i> Lam.   | 150942    | 72 <i>Telekia speciosa</i> (Schreb.) Baumg.  | 130258     |
| 41                    | <i>Achillea ptarmica</i> 'The Pearl'   | 143012    | 73 <i>Telekia speciosa</i> (Schreb.) Baumg.  | VIN97/350  |
| 42                    | <i>Ageratum houstonianum</i> 'Florist's Blue'  | 416/97    | 74 <i>Verbesina alternifolia</i> (L.) Britton ex Kearney                           | 030482     |
| 43                    | <i>Anaphalis margaritacea</i> (L.) Benth. & Hook.f.  | 150470    | 75 <i>Zinnia peruviana</i> 'Bonita Yellow'   | 150433     |
| 44                    | <i>Antennaria plantaginifolia</i> (L.) Richardson  | 060951    | <b>Balsaminaceae</b>   |            |
| 45                    | <i>Aster alpinus</i> 'Happy End'   | 150354    | 76 <i>Impatiens balsamina</i> 'Violeceous'   | 090949     |
| 46                    | <i>Calendula officinalis</i> L.  | 419/97    | <b>Basellaceae</b>   |            |
| 47                    | <i>Calendula officinalis</i> 'Fiesta Gitana'   | 95/97     | 77 <i>Basella alba</i> L. 'Rubra'  | 150164     |
| 48                    | <i>Callistephus chinensis</i> 'Chino Mani'   | 151204    | <b>Boraginaceae</b>  |            |
| 49                    | <i>Callistephus chinensis</i> 'Serenade' Mix   | 150452    | 78 <i>Heliotropium arborescens</i> 'Marine'  | 715/00     |
| 50                    | <i>Chrysanthemum coronarium</i> 'Chop Suey'  | 150109    | <b>Brassicaceae</b>  |            |
| 51                    | <i>Centaurea cyanus</i> 'Black Beauty'   | 712/00    | 79 <i>Alyssoides utriculata</i> (L.) Medik.  | VIN99/433  |
| 52                    | <i>Centaurea cyanus</i> 'Blue Ball'  | 465/96    | 80 <i>Arabis procurrens</i> Waldst. & Kit.   | 140285     |
| 53                    | <i>Coreopsis auriculata</i> L.   | 110617    | 81 <i>Lunaria rediviva</i> L.  | 492/96     |
| 54                    | <i>Cosmos bipinnatus</i> 'Double Click Bonbon'   | 713/00    | 82 <i>Lunaria rediviva</i> L.  | 060949     |
| 55                    | <i>Cosmos bipinnatus</i> 'Fizzy Rose Picotee'  | 150491    | <b>Caryophyllaceae</b>   |            |
| 56                    | <i>Cosmos bipinnatus</i> 'Sonata Rosa'   | 110378    | 83 <i>Atocion compactum</i> (Fisch.) Oxelman<br>(= <i>Silene compacta</i> Fischer) | 110113     |
| 57                    | <i>Cosmos sulphureus</i> 'Diablo'  | 160674    | 84 <i>Dianthus subcaulis</i> Vill.   | 120506     |
| 58                    | <i>Cosmos sulphureus</i> Cav.  | 150084    | 85 <i>Dianthus giganteus</i> d'Urv. subsp. <i>croaticus</i> (Borbás)<br>Tutin      | 140287     |
| 59                    | <i>Echinacea purpurea</i> 'White Swan'   | 558/93    | 86 <i>Silene chalcedonica</i> (L.) E. H. L. Krause                                 | 120666     |
| 60                    | <i>Gerbera nivea</i> (DC.) Sch. Bip.   | 130043    | 87 <i>Silene chalcedonica</i> L. E.H.L. Krause                                     | 150056     |
| 61                    | <i>Helenium aromaticum</i> (Hook.) L.H.Bailey<br>(= <i>Cephalophora aromatica</i> Schrad.) | 150472    | 88 <i>Silene chalcedonica</i> L. E.H.L. Krause                                     | 150849     |
| 62                    | <i>Helianthus annuus</i> 'Rote Farben'   | 721/00    | 89 <i>Silene coronaria</i> (L.) Clairv.<br>(= <i>Lychnis coronaria</i> (L.) Desr.) | 150848     |
| 63                    | <i>Helianthus annuus</i> 'Mini Sun'  | 581/97    |  |            |
| 64                    | <i>Helianthus giganteus</i> L.   | 150723    |  |            |
| 65                    | <i>Helichrysum bracteatum</i> 'Salmon Shades'  | 538/97    |  |            |
| 66                    | <i>Onopordum illyricum</i> L.  | 150767    |  |            |
| 67                    | <i>Sinacalia tangutica</i> (Maxim.) B. Nord.   | VIN99/777 |  |            |

|                                       |  |           |                      |  |           |
|---------------------------------------|--|-----------|----------------------|--|-----------|
| <b>Celastraceae</b>                   |  |           | <b>Euphorbiaceae</b> |  |           |
| 90                                    | <i>Euonymus alatus</i> (Thunb.) Siebold  | 921197    | 111                  | <i>Euphorbia lathyris</i> L. (2015)*   | 070366    |
| 91                                    | <i>Euonymus hamiltonianus</i> Wall. var. <i>maackii</i> (Rupr.) Kom.                                       | 925066    | 112                  | <i>Ricinus communis</i> 'Carmencita Rot'   | 160175    |
| 92                                    | <i>Euonymus macropterus</i> Rupr.  | 922045    | <b>Fabaceae</b>      |  |           |
| 93                                    | <i>Tripterygium regelii</i> Sprague & Takeda   | 920044    | 113                  | <i>Astragalus cicer</i> L.   | 060947    |
| <b>Chenopodiaceae (Amaranthaceae)</b> |  |           | 114                  | <i>Baptisia australis</i> (L.) R.Br. (2015)*   | 060950    |
| 94                                    | <i>Dysphania schraderiana</i> (Schult.) Mosyakin & Clemants (= <i>Chenopodium schraderianum</i> Schult.)   | VIN031687 | 115                  | <i>Desmodium canadense</i> (L.) DC.  | 030759    |
| <b>Cleomaceae</b>                     |  |           | 116                  | <i>Maackia amurensis</i> Rupr. & Maxim.  | 921196    |
| 95                                    | <i>Tarenaya hassleriana</i> (Chodat) Iltis   | 150512    | 117                  | <i>Thermopsis villosa</i> (Walter) Fernald. & B.G. Schub. (= <i>T. caroliniana</i> M.A.Curtis) | VIN00/564 |
| 96                                    | <i>Tarenaya spinosa</i> (Jacq.) Rafin  | 110850    | 118                  | <i>Trifolium rubens</i> L.   | 476/97    |
| 97                                    | <i>Tarenaya spinosa</i> 'Helen Campbell'   | 130446    | <b>Fagaceae</b>      |  |           |
| <b>Crassulaceae</b>                   |  |           | 119                  | <i>Quercus mongolica</i> Fisch. ex Ledeb.  | 920459    |
| 98                                    | <i>Rhodiola kirilowii</i> (Regel) Maxim.   | 070093    | <b>Gentianaceae</b>  |  |           |
| 99                                    | <i>Umbilicus oppositifolius</i> (Ledeb.) Ledeb. (= <i>Chiastophyllum oppositifolium</i> (Ledeb.) A.Berger) | VIN99/335 | 120                  | <i>Gentiana clausa</i> Raf.  | 100377    |
| <b>Dipsacaceae</b>                    |  |           | 121                  | <i>Gentiana cruciata</i> L.  | 090817    |
| 100                                   | <i>Dipsacus laciniatus</i> L.  | 456/93    | 122                  | <i>Gentiana dahurica</i> Fisch.  | 120253    |
| 101                                   | <i>Scabiosa columbaria</i> L.  | 152019    | 123                  | <i>Gentiana decumbens</i> L.f.   | 140205    |
| 102                                   | <i>Scabiosa ochroleuca</i> L.  | 151611    | 124                  | <i>Gentiana tibetica</i> King ex Hook.f.   | 120133    |
| <b>Ericaceae</b>                      |  |           | <b>Juglandaceae</b>  |  |           |
| 103                                   | <i>Enkianthus campanulatus</i> (Miq.) G. Nicholson   | 010089    | 125                  | <i>Juglans mandshurica</i> Maxim.  | 920464    |
| 104                                   | <i>Gaultheria procumbens</i> L.  | 930398    | <b>Lamiaceae</b>     |  |           |
| 105                                   | <i>Kalmia angustifolia</i> L.  | 920146    | 126                  | <i>Agastache foeniculum</i> (Pursh) Kuntze   | 120665    |
| 106                                   | <i>Menziesia ferruginea</i> Sm.  | 950074    | 127                  | <i>Agastache rugosa</i> 'Golden Jubilee'   | 151336    |
| 107                                   | <i>Menziesia pentandra</i> Maxim.  | 920489    | 128                  | <i>Clinopodium thymifolium</i> Kuntze  | 140288    |
| 108                                   | <i>Rhododendron canadense</i> (L.) Toor.   | 911006    | 129                  | <i>Dracocephalum renati</i> Emb.   | 150731    |
| 109                                   | <i>Rhododendron smirnovii</i> Trautv.  | 920015    | 130                  | <i>Melissa officinalis</i> L.  | 120737    |
| 110                                   | <i>Rhododendron vasey</i> A.Gray   | 990100    | 131                  | <i>Salvia amplexicaulis</i> Lam.   | VIN97/121 |
|                                       |  |           | 132                  | <i>Salvia coccinea</i> 'Coral Nymph'   | 150110    |



|     |                                       |           |
|-----|---------------------------------------|-----------|
| 133 | <i>Salvia glutinosa</i> L.            | VIN01/356 |
| 134 | <i>Salvia lyrata</i> L.               | 152024    |
| 135 | <i>Salvia nemorosa</i> L.             | 130089    |
| 136 | <i>Salvia nemorosa</i> 'Blaukönigin'  | 152022    |
| 137 | <i>Salvia splendens</i> Ker Gawl.     | 510/96    |
| 138 | <i>Salvia verticillata</i> L.         | 130090    |
| 139 | <i>Salvia viridis</i> 'Clary Bouquet' | 150432    |
| 140 | <i>Sideritis hyssopifolia</i> L.      | 143146    |

#### Linaceae

|     |                         |        |
|-----|-------------------------|--------|
| 141 | <i>Linum perenne</i> L. | 151188 |
|-----|-------------------------|--------|

#### Lythraceae

|     |                             |        |
|-----|-----------------------------|--------|
| 142 | <i>Lythrum salicaria</i> L. | 130272 |
|-----|-----------------------------|--------|

#### Malvaceae

|     |                               |           |
|-----|-------------------------------|-----------|
| 143 | <i>Alcea rugosa</i> Alef.     | 150224    |
| 144 | <i>Althaea officinalis</i> L. | VIN81/100 |
| 145 | <i>Lavatera cretica</i> L.    | 151210    |

#### Nyctaginaceae

|     |                                 |        |
|-----|---------------------------------|--------|
| 146 | <i>Mirabilis jalapa</i> L.      | 040903 |
| 147 | <i>Mirabilis jalapa</i> 'Alba'  | 600/94 |
| 148 | <i>Mirabilis jalapa</i> 'Lutea' | 602/94 |
| 149 | <i>Mirabilis jalapa</i> 'Pink'  | 601/94 |

#### Onagraceae

|     |                              |           |
|-----|------------------------------|-----------|
| 150 | <i>Lopezia racemosa</i> Cav. | VIN94/453 |
|-----|------------------------------|-----------|

#### Papaveraceae

|     |   |        |
|-----|---|--------|
| 151 | <i>Argemone mexicana</i> L. (= <i>A. grandiflora</i> Sweet) | 150474 |
| 152 | <i>Eschscholzia californica</i> 'Orange'                    | 606/94 |
| 153 | <i>Papaver nudicaule</i> L.                                 | 150318 |

#### Plantaginaceae (Scrophulariaceae)

|     |  |           |
|-----|--|-----------|
| 154 | <i>Antirrhinum majus</i> L.                        | 563/97    |
| 155 | <i>Antirrhinum majus</i> 'Appleblossom'            | 574/97    |
| 156 | <i>Antirrhinum pumilum</i> 'Emerald Isles Mix'     | 573/97    |
| 157 | <i>Antirrhinum orontium</i> L.                     | VIN94/86  |
| 158 | <i>Digitalis purpurea</i> L.                       | 151002    |
| 159 | <i>Globularia cordifolia</i> L.                    | 990203    |
| 160 | <i>Globularia punctata</i> Lapeyr.                 | 140507    |
| 161 | <i>Globularia trichosantha</i> Fisch. & C. A. Mey. | 120315    |
| 162 | <i>Plantago altissima</i> L.                       | 152140    |
| 163 | <i>Veronica gentianoides</i> Vahl                  | VIN96/386 |
| 164 | <i>Veronica spicata</i> L.                         | 492/92    |

#### Plumbaginaceae

|     |   |        |
|-----|---|--------|
| 165 | <i>Armeria pseudarmeria</i> (Murray) Mansfeld | 060044 |
|-----|---|--------|

#### Polemoniaceae

|     |                                     |            |
|-----|-------------------------------------|------------|
| 166 | <i>Collomia grandiflora</i> Lindley | VIN 99/254 |
| 167 | <i>Phlox drummondii</i> Hook.       | 110100     |

#### Portulacaceae

|     |                                    |        |
|-----|------------------------------------|--------|
| 168 | <i>Portulaca grandiflora</i> Hook. | 120664 |
|-----|------------------------------------|--------|

#### Primulaceae

|     |                                |        |
|-----|--------------------------------|--------|
| 169 | <i>Primula japonica</i> A.Gray | 150675 |
|-----|--------------------------------|--------|

#### Ranunculaceae

|     |   |            |
|-----|---|------------|
| 170 | <i>Aconitum barbatum</i> Patr. ex Pers.   | 140009     |
| 171 | <i>Actaea europaea</i> (Schipcz.) J. Compton<br>(= <i>Cimicifuga europaea</i> Schipcz.) | VIN98/3    |
| 172 | <i>Eranthis hyemalis</i> Salisb.  | VIN74/1769 |
| 173 | <i>Clematis heracleifolia</i> DC.   | 880063     |
| 174 | <i>Clematis hexapetala</i> Pall.  | 870037     |
| 175 | <i>Clematis recta</i> L.  | 920250     |

|     |  |        |
|-----|--|--------|
| 176 | <i>Clematis serratifolia</i> Rehder          | 800006 |
| 177 | <i>Nigella damascena</i> L.                  | 491/97 |
| 178 | <i>Trollius x cultorum</i> 'Orange Princess' | 234/97 |
| 179 | <i>Trollius ledebourii</i> Rchb.             | 140018 |
| 180 | <i>Trollius pumilus</i> D.Don                | 140013 |

#### **Rosaceae**

|     |  |         |
|-----|--|---------|
| 181 | <i>Acaena novae-zelandiae</i> T. Kirk                            | 150757  |
| 182 | <i>Exochorda racemosa</i> (Lindl.) Rehder subsp. <i>racemosa</i> | 781041  |
| 183 | <i>Geum coccineum</i> Sibth. & Sm.                               | 5/92    |
| 184 | <i>Sanguisorba canadensis</i> L.                                 | VIN98/6 |
| 185 | <i>Sorbus sambucifolia</i> (Cham. & Schltl.) M. Roem.            | 920444  |

#### **Rutaceae**

|     |                             |        |
|-----|-----------------------------|--------|
| 186 | <i>Ptelea trifoliata</i> L. | 770088 |
|-----|-----------------------------|--------|

#### **Saxifragaceae**

|     |   |            |
|-----|---|------------|
| 187 | <i>Rodgersia sambucifolia</i> Hemsl.                  | VIN74/1611 |
| 188 | <i>Tellima grandiflora</i> (Purch) Douglas ex Lindley | VIN94/319  |

#### **Solanaceae**

|     |  |        |
|-----|--|--------|
| 189 | <i>Nicotiana alata</i> Link & Otto         | 621/94 |
| 190 | <i>Nicotiana langsdorffii</i> 'Lemon Tree' | 150438 |
| 191 | <i>Nicotiana tabacum</i> L.                | 620/94 |

#### **Staphyleaceae**

|     |                             |        |
|-----|-----------------------------|--------|
| 192 | <i>Staphylea pinnata</i> L. | 810017 |
|-----|-----------------------------|--------|

#### **Verbenaceae**

|     |                                   |        |
|-----|-----------------------------------|--------|
| 193 | <i>Verbena canadensis</i> Britton | 150450 |
| 194 | <i>Verbena bonariensis</i> L.     | 150113 |
| 195 | <i>Verbena officinalis</i> L.     | 030338 |
| 196 | <i>Verbena rigida</i> Spreng.     | 150444 |

#### **Polypodiopsida**

##### **Onocleaceae**

|     |                              |           |
|-----|------------------------------|-----------|
| 197 | <i>Onoclea sensibilis</i> L. | VIN99/752 |
|-----|------------------------------|-----------|

##### **Polypodiaceae**

|     |                              |        |
|-----|------------------------------|--------|
| 198 | <i>Polypodium vulgare</i> L. | 041594 |
|-----|------------------------------|--------|



## Agreement of the supply of plant material <sup>1</sup>

According to the provisions and decisions of the Convention on Biological Diversity of 1992 (CBD) and of the Regulation (EU) No 511/2014 of the European Parliament and the council of 16 April 2014, on compliance measures for users from the Nagoya Protocol on Access to Genetic Resources and the Fair and Equitable Sharing of Benefits Arising from their Utilization in the Union, the Vilnius University Botanical Garden is promoting the conservation, sustainable use, and research of biological diversity. The garden therefore expects its partners in acquiring, maintaining, and transferring plant material to always act in accordance with the CBD, the Nagoya Protocol and the Convention on the International Trade in Endangered Species (CITES). The responsibility for legal handling of the plant material passes on to the recipient upon receipt of the material. The requested plant material will be supplied to the recipient only on the following conditions:

1. Based on this agreement, the plant material is supplied only for non commercial use such as scientific study and educational purposes as well as environmental protection. Should the recipient at a later date intend a commercial use or a transfer for commercial use, the country of origin's (the primary "donor" of material) prior informed consent (PIC) must be obtained in writing before the material is used or transferred. The recipient is responsible for ensuring an equitable sharing of benefits with the country of material origin or the primary "donor" 2.
2. On receiving the plant material, the recipient endeavors to document the received plant material, its origin (country of origin, first receiving garden, "donor" of the plant material, year of introduction) as well as the acquisition and transfer conditions in a comprehensible manner.
3. In the event that scientific publications are produced based on the supplied plant material, the recipient is obliged to indicate the origin of the material (the supplying garden and if known the country of origin or primary donor) and to send these publications to the garden and to the country of origin (primary "donor") without request.
4. On request, the garden will forward relevant information on the transfer of the plant material to the body charged with implementing the CBD3.
5. The recipient may transfer the received plant material to third parties only under these terms and conditions and must document the transfer in a suitable manner.

<sup>1</sup> According to the CBD "genetic resources" means genetic material of actual or potential value. This definition covers both living and non-living material.

<sup>2</sup> The country of material origin or the primary "donor" of the material provided by Vilnius University Botanical Garden is possible to identify using accession number of specimen (indicated on the Seed List) and information available on-line <http://botsodas.lt/indexplantarum/index/lang/en>.

<sup>3</sup> Ideally, the national focal point in the garden's home country

I accept these conditions.

Date & Signature Recipient's name, address, stamp



VILNIUS UNIVERSITY BOTANICAL GARDEN  
Kairėnų 43, LT – 10239,  
VILNIUS – 40, Lithuania  
Web: [www.botanikos-sodas.vu.lt](http://www.botanikos-sodas.vu.lt)  
**E-mail: [index.seminum@bs.vu.lt](mailto:index.seminum@bs.vu.lt)**

Your address:

### DESIDERATA

|  |  |  |  |  |
|--|--|--|--|--|
|  |  |  |  |  |
|  |  |  |  |  |
|  |  |  |  |  |
|  |  |  |  |  |
|  |  |  |  |  |

Substitutes:

|  |  |  |  |  |
|--|--|--|--|--|
|  |  |  |  |  |
|  |  |  |  |  |

Attention:

- Please limit your order to 25 samples (use serial (left side) numbers).
- Please return your request before 31 of MARCH 2017.



*Euonymus macropterus*



*Ptelea trifoliata*



*Papaver nudicaule*



*Phlox drummondii*



*Enkianthus campanulatus*



*Gentiana tibetica*



*Callistephus chinensis*



*Euphorbia lathyris*



*Gentiana clausa*



*Globularia cordifolia*



*Quercus mongolica*



*Helichrysum bracteatum*